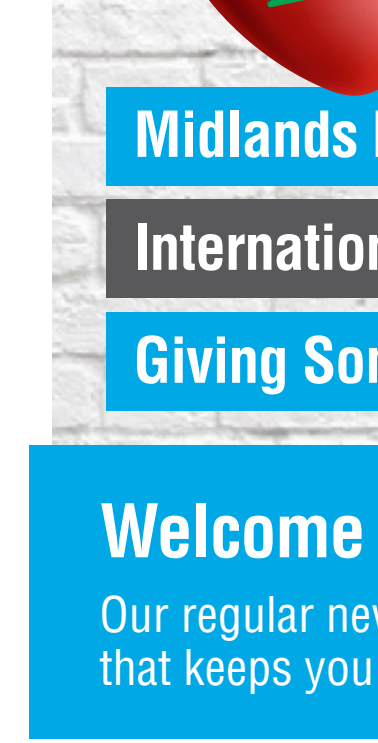


## > EQUAL OPPORTUNITIES. NEW OFFICES.



**Midlands Expansion**

**International Women's Day**

**Giving Something Back** **CSR**

### Welcome to RGS insite issue 41

Our regular newsletter celebrating more than a decade of drilling that keeps you up to date with RGS and industry news.

Rogers Geotechnical Services Ltd are site investigation specialists offering ground investigation and geotechnical services to developers, builders, structural and consulting engineers, architects, insurance companies, local authorities, piling and foundation engineers, private individuals and other geotechnical consultants.

## The Midlands: Strengthening our market share

We are delighted to announce the return of our geo-environmental engineer, **Charlotte Mason**, who has just returned to RGS after a stint working elsewhere.

Charlotte works out of our new offices in **Castle Donington** and will bring invaluable expertise and local knowledge to the team.



OUR FANTASTIC NEW OFFICE SPACE  
Picture Supplied by DBS Centres



Charlotte, who has a BSC Geology Degree from the University of Leicester, said,

“It's great to be back and hugely exciting to be working from our brand new offices in Market Place, **Castle Donington**. Our presence here will provide an invaluable spring board, to strengthen our offer and market share in the Midlands.

### EQUAL OPPORTUNITIES

## Celebrating International Women's Day!



Left to right, Emma, Charlotte, Jude and Katie.

RGS prides itself on offering equal opportunities and creating a **gender balance** in what can be traditionally seen as a 'man's world'.

To mark International Women's Day (IWD) on March 8th, we interviewed the RGS' women who are carving out highly successful careers in a technical and engineering environment.

RGS MD Emma Lewis explains:

“Encouragement and opportunities are the key to achieving true gender balance. Across the industry, we need to do much more to appeal and attract women into what is often considered as a male-dominated sector.

Here at RGS, we do this by offering work experience and opportunities from GCSEs right up to post-graduate level.

But there is no positive discrimination - we take males and females from all walks of life and aim to encourage both sexes to strive for equality and excellence.

Click here to read #BALANCE FOR BETTER including Emma's full profile, an insight into the roles of Charlotte Mason, Laboratory Manager Jude Norcliffe and Engineering Support, Katie Wallett.

### CORPORATE SOCIAL RESPONSIBILITY

## Investing in People and Communities



Rogers Geotechnical Services Ltd has published its first **Corporate Social Responsibility (CSR) Policy** formalising its long-term commitment to investing in our staff, communities and the planet.

Through investment we aim to strike a healthy balance between our triple bottom line comprising **social, environmental and financial objectives**.

RGS MD Emma Lewis explains:

“There is nothing fundamentally new in our CSR policy as we've always strived to operate as an ethical and responsible business. What the policy does do is pull together all our great achievements so far, consolidate them and set out a clear pathway for the future.

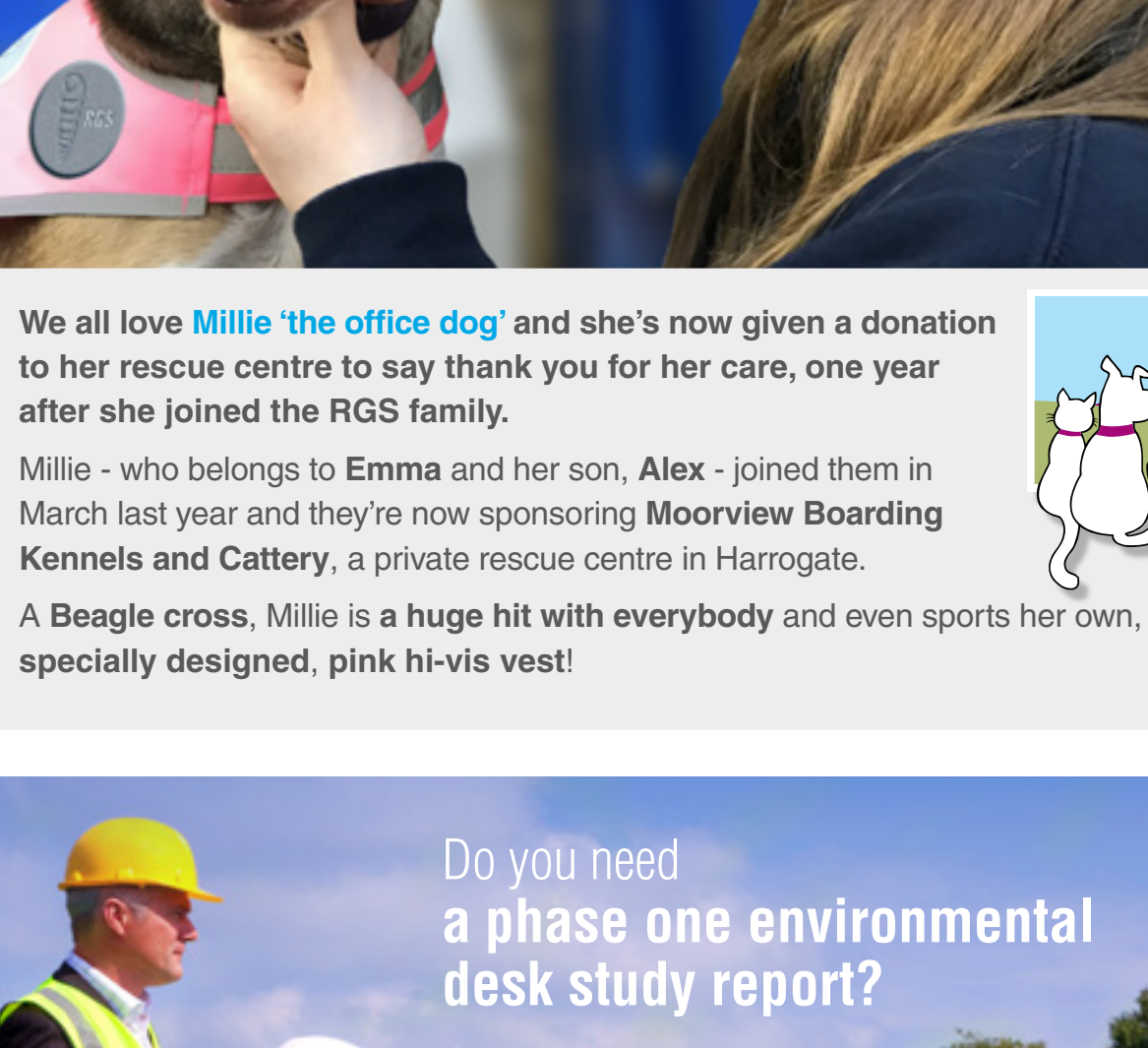
This involves investing in all the people that are involved in our day-to-day operations, including our employees, clients, suppliers, stakeholders and local charities. We also aim to support local community groups and charities whenever and wherever we can.

This is in recognition of the fantastic work that charities do locally and we continue to support the children's cancer charity, **Ruddi's Retreat** and **Circus Starr**.

Click here to read the full policy

### SUPPORTING THE COMMUNITY

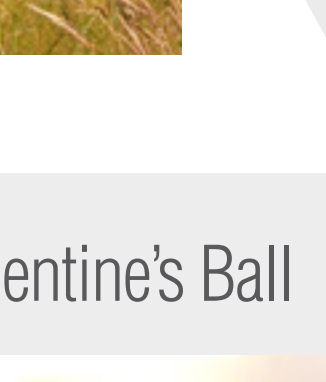
## Giving Something Back



We all love **Millie 'the office dog'** and she's now given a donation to her rescue centre to say thank you for her care, one year after she joined the RGS family.

Millie - who belongs to Emma and her son, Alex - joined them in March last year and they're now sponsoring **Moorview Kennels and Cattery**, a private rescuing centre in Harrogate.

A Beagle cross, Millie is a huge hit with everybody and even sports her own, specially designed, pink hi-vis vest!



### SUPPORTING COMMUNITY HEALTH

## Love and Support @ the Valentine's Ball



As part of our commitment to supporting **Ruddi's Retreat**, we supported their **Valentine's Ball** by taking a table and four of our team went along to fly the RGS flag.

The charity - which offers help to families of young children suffering from the effects and after-effects of cancer and life-limiting illnesses - is based in Linthwaite, Huddersfield.

RGS MD Emma Lewis explains:

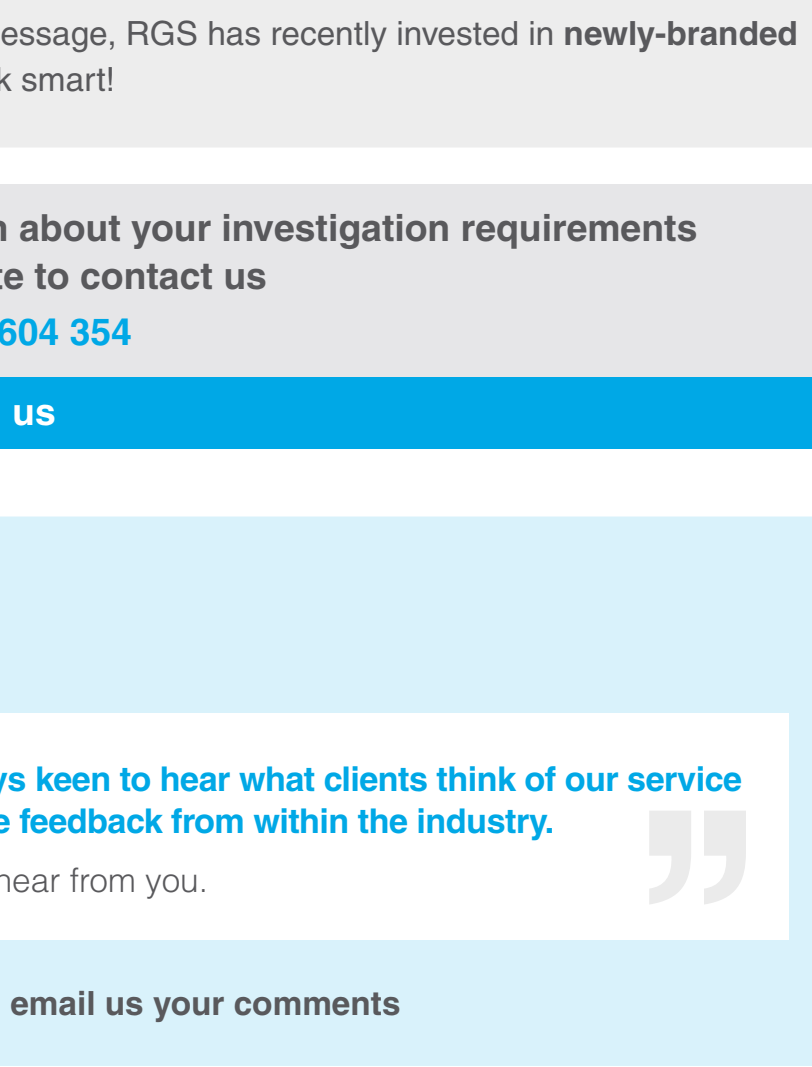
“We have now sponsored **Ruddi's Retreat** for two years having previously helped with running shirts for their fundraising team. It is a real pleasure to support such an invaluable and worthwhile community cause.

### HEALTH & SAFETY

## Head to Toe!

As part of our regular health and safety updates, we are this month focusing on ensuring that you're seen and when it's essential to wear **high-visibility vests**.

Click here to take the time to read the handy tips in our poster.



To reinforce the safety message, RGS has recently invested in newly-branded PPE - don't the guys look smart!

For more information about your investigation requirements please do not hesitate to contact us

Telephone on 01484 604 354

or click here to email us

### CLIENT FEEDBACK

## Talk to us

“We are always keen to hear what clients think of our service and welcome feedback from within the industry.

We'd love to hear from you.

Click here to email us your comments

Environmental Geotechnical Specialists



Rogers Geotechnical Services Ltd  
Telephone 01484 604 354 Fax 0843 51 599 30  
Email enquiries@rogersgeotech.co.uk  
www.rogersgeotech.co.uk

